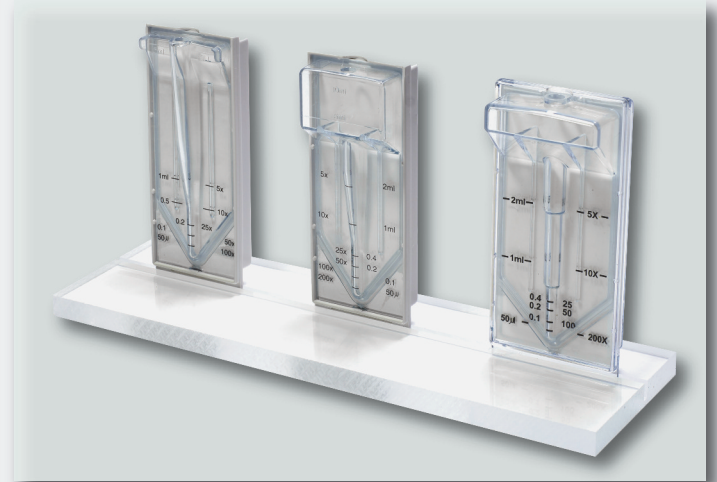


BJP Clinical Concentrators

Concentration of Clinical Samples

Your Source for Clinical Concentrators
Call us at 800-456-4633



BJP concentrators offer fast and convenient means to prepare multiple clinical samples for analysis by electrophoresis or immunoassay. This is done without a centrifuge, pressure or vacuum source. Absorbent pads pull solvent and microsolutes through the ultrafilter concentrating the sample. A dead stop pocket at the bottom of each cell minimizes the chance to concentrate the sample to dryness. The BJP clinical concentrators are intended for *in vitro* diagnostic (IVD) applications and are labeled accordingly.

BJP Clinical Applications

- Concentration of urine prior to electrophoresis for diagnosis of multiple myeloma and amyloidosis.
- Concentrate spinal fluid prior to electrophoresis for diagnosis of meningitis and multiple sclerosis.
- Concentrate bacterial antigens in urine (*Legionella*, *Pneumonia*, *Streptococcus B*) prior to immunoassay

Features	Benefits
Integrated dead stop	Minimal risk of sample concentration to dryness
Uses plastic instead of glass Pasteur pipettes	No glass breakage during sample removal.
Black print for graduations	Easy to read.
Large volume models hold up to 20 ml	Concentrate 100x in one cell and still have 100 µl for IFE tests.
Available as individual units or as 8 test blocks.	Individual units may be disposed after use. Blocks may have to be stored with sample residue

Technical Specifications

Concentrator Capacity	BJP-5	BJP-10	BJP-20
Normal Volume	5 ml	10 ml	10 ml
With optional reservoir (BJPA-ER20)	NA	NA	20 ml

Dimensions

For BJP-5/30 & 5/100, BJP-10/30 & 10/100, BP-20/30 & 20/100 (All individual test units)

Width	38 mm	38 mm	45 mm
Height	100 mm	100 mm	100 mm
Depth	24 mm	24 mm	27 mm

For BJP-5/40, BJP-10/40 (8 test blocks)

Width	147 mm	147 mm	NA
Height	94 mm	94 mm	NA
Depth	70 mm	70 mm	NA

Active membrane area	25 cm ²	25 cm ²	28 cm ²
Dead stop volume	50 µl	50 µl	50 µl

Materials of Construction

Membrane	Polyethersulfone (PES)(7,500 MWCO)
Reservoir	Acrylonitrile Butadiene Styrene Polymer

Equipment Required

Pipettes for Sample Transfer & Stands for Individual BJP Units

Plastic disposable pipettes are recommended and sold separately or with BJP packages (diameter 45 mm tapering to 1.0 mm, tip length 115 mm).

The BJP individual units require the acrylic stand accessory (Item BJPA-AS) which must be ordered separately.

Suggested Concentration Factors for Urine Samples

For a BJP Concentration Factor Calculator please visit: www.vivaproducts.com/calculator.html

Suggested CAP Validation Procedures

For Recommended Procedures please visit:

www.vivaproducts.com/downloads/lab-procedure-performing-the-test.pdf

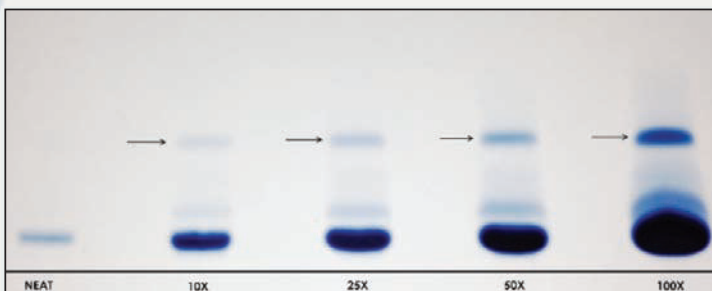
To download the CAP Calculation Table please visit: <http://www.vivaproducts.com/downloads/cap-recovery-table.xls>

Performance Characteristics

Typical Performance	BJP-5	BJP-10	BJP-20	BJP-20	BJP-5	BJP-10	BJP-20
7,500 MWCO PES							
	Time to concentrate 10x min. at 20°C				Concentrate recovery %		
Start Volume	5 ml	10 ml	10 ml	20 ml	5 ml	10 ml	10 ml
Albumin (66,000 MW) (0.25 mg/ml)	30	60	55	110**	92%	92%	92%
IgG (160,000 MW) (0.25 mg/ml)	35	70	65	130**	65%	68%	68%
	Time to concentrate 50x min. at 20°C				Concentrate recovery %		
Albumin (66,000 MW) (0.25 mg/ml)	40	80	75	150**	90%	90%	90%
IgG (160,000 MW) (0.25 mg/ml)	45	90	85	170**	56%	60%	60%

** All 20 ml samples start at 0.10 mg/ml

Concentration of Bence Jones or M Protein in Urine



Patterns for urine protein electrophoresis from a sample with starting total protein of 30 - 100 mg/dL. Albumin bands show on bottom and monoclonal free light chains (Bence Jones or M protein) show on top (see arrows). Sample is split and concentrated to increasing amounts as shown on bottom. Note that the Neat (unconcentrated) sample does not show a visible M protein band

Ordering Information

Type of Device	No. Tests	BJP-5	BJP-10	BJP-20
Individual device (no pipettes)	30	BJP-5/30	BJP-10/30	BJP-20/30
Individual device (with pipettes)	30	BJP-5/30P	BJP-10/30P	BJP-20/30P
Individual device (no pipettes)	100	BJP-5/100	BJP-10/100	BJP-20/100
Individual device (with pipettes)	100	BJP-5/100P	BJP-10/100P	BJP-20/100P
8 test block (no pipettes)	40	BJP-5/40	BJP-10/40	
8 test block (with pipettes)	40	BJP-5/40P	BJP-10/40P	

Accessories:

Plastic disposable pipettes (qty of 250)	BJPA-P250
Plastic disposable pipettes (qty of 100)	BJPA-P100
Plastic disposable pipettes (qty of 40)	BJPA-P40
Plastic disposable pipettes (qty of 30)	BJPA-P30
Expansion reservoirs for use with BJP-20 devices (qty of 10)	BJPA-ER20
Acrylic stand for BJP individual units	BJPA-AS

Manufactured by:



521 Great Road • Littleton, MA 01460 • www.vivaproducts.com • Phone: 800.456.4633 • Fax: 877.289.8482

Visit our website www.vivaproducts.com for pricing and online ordering!